

**UNITED STATES
SECURITIES AND EXCHANGE COMMISSION**

Washington, D.C. 20549

FORM 8-K

CURRENT REPORT

**Pursuant to Section 13 or 15(d) of the
Securities Exchange Act of 1934**

Date of Report (Date of earliest event reported): **June 2, 2014**

Monster Beverage Corporation

(Exact name of registrant as specified in its charter)

Delaware

(State or other jurisdiction of incorporation)

0-18761

(Commission File Number)

39-1679918

(IRS Employer Identification No.)

1 Monster Way

Corona, California 92879

(Address of principal executive offices and zip code)

(951) 739 - 6200

(Registrant's telephone number, including area code)

N/A

(Former name or former address, if changed since last report)

Check the appropriate box below if the Form 8-K filing is intended to simultaneously satisfy the filing obligation of the registrant under any of the following provisions:

- Written communications pursuant to Rule 425 under the Securities Act (17 CFR 230.425)
- Soliciting material pursuant to Rule 14a-12 under the Exchange Act (17 CFR 240.14a-12)
- Pre-commencement communications pursuant to Rule 14d-2(b) under the Exchange Act (17 CFR 240.14d-2(b))
- Pre-commencement communications pursuant to Rule 13e-4(c) under the Exchange Act (17 CFR 240.13e-4(c))

Item 8.01. Other Events.

On May 23, 2014, Monster Beverage Corporation ("Monster") issued a press release announcing that Monster will provide a live audio webcast of the business discussion and question and answer portion of the annual stockholders' meeting on Monday, June 2, 2014. The meeting will commence at 1:00 p.m. Pacific Time and the webcast will start at approximately 1:20 p.m. Pacific Time. The business discussion will include a presentation. A copy of the slides that will be used in the meeting is furnished as Exhibit 99.2 hereto.

The live webcast will be available on the "Events & Presentations" page of Monster's website at www.monsterbevcorp.com. For those who are not able to listen to the live broadcast, it will be archived for approximately one year on the website.

Item 9.01. Financial Statements and Exhibits.

(d) Exhibits

The following exhibits are furnished herewith:

Exhibit 99.1 Press Release dated May 23, 2014

Exhibit 99.2 Presentation Slides.

SIGNATURES

Pursuant to the requirements of the Securities Exchange Act of 1934, the registrant has duly caused this report to be signed on its behalf by the undersigned hereunto duly authorized.

Monster Beverage Corporation

Date: June 2, 2014

/s/ Hilton H. Schlosberg

Hilton H. Schlosberg

Vice Chairman of the Board of Directors,
President and Chief Financial Officer



Pondel Wilkinson

Pondel Wilkinson Inc.
1880 Century Park East, Suite 350
Los Angeles, CA 90067

Investor Relations
Strategic Public Relations

T (310) 279 5980
F (310) 279 5988
W www.pondel.com

CONTACTS: Rodney C. Sacks
Chairman and Chief Executive Officer
(951) 739-6200

NEWS
RELEASE

Hilton H. Schlosberg
Vice Chairman
(951) 739-6200

Roger S. Pondel / Judy Lin Sfetcu
Pondel Wilkinson Inc.
(310) 279-5980

**MONSTER BEVERAGE ANNOUNCES WEBCAST DETAILS
FOR ANNUAL STOCKHOLDERS' MEETING**

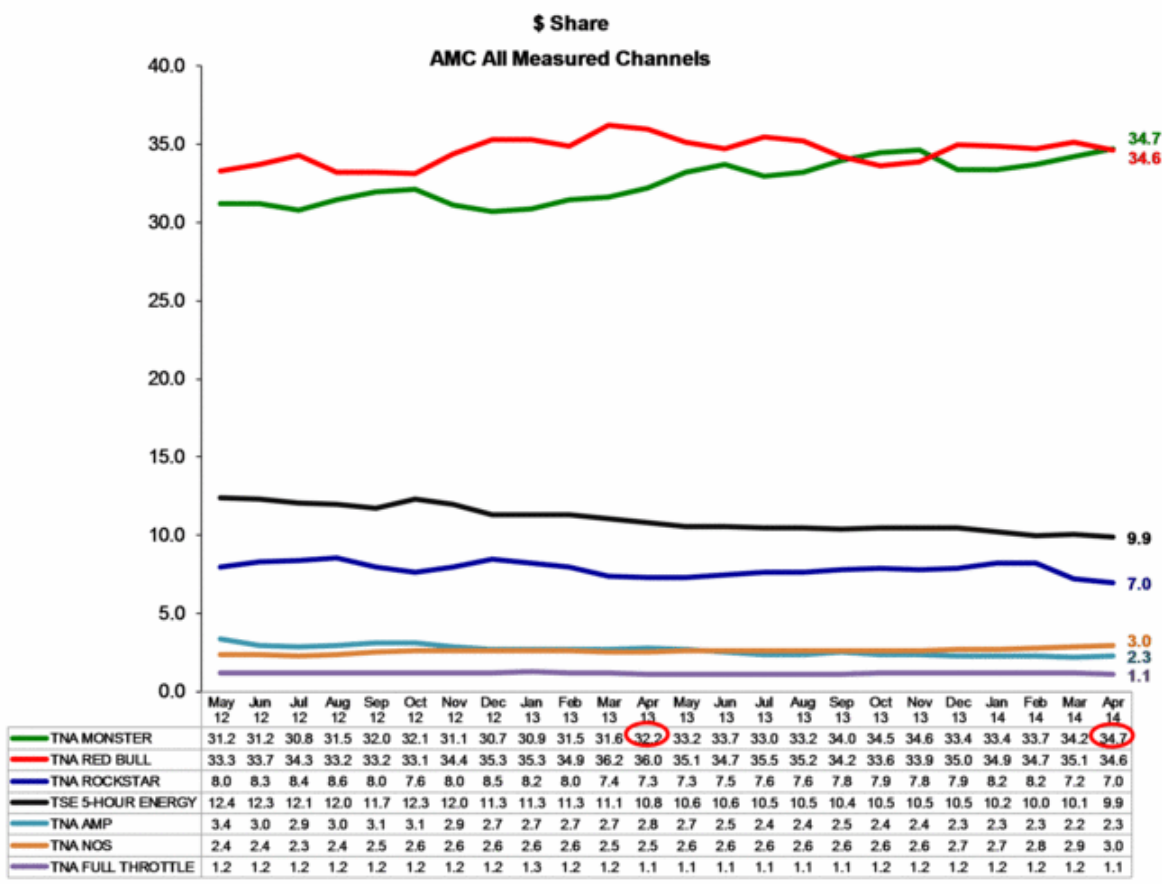
Corona, CA — May 23, 2014 — Monster Beverage Corporation (NASDAQ:MNST) announced today that the Company will provide a live audio webcast of the business discussion and question and answer portion of its annual stockholders' meeting on Monday, June 2, 2014. The webcast will start at 1:20 p.m. Pacific Time, following the formal portion of the meeting, which will begin at 1:00 p.m. Pacific Time.

The live audio webcast will be available at www.monsterbevcorp.com under the "Events & Presentations" section. For those who are not able to listen to the live broadcast, the event will be archived for approximately one year on the website.

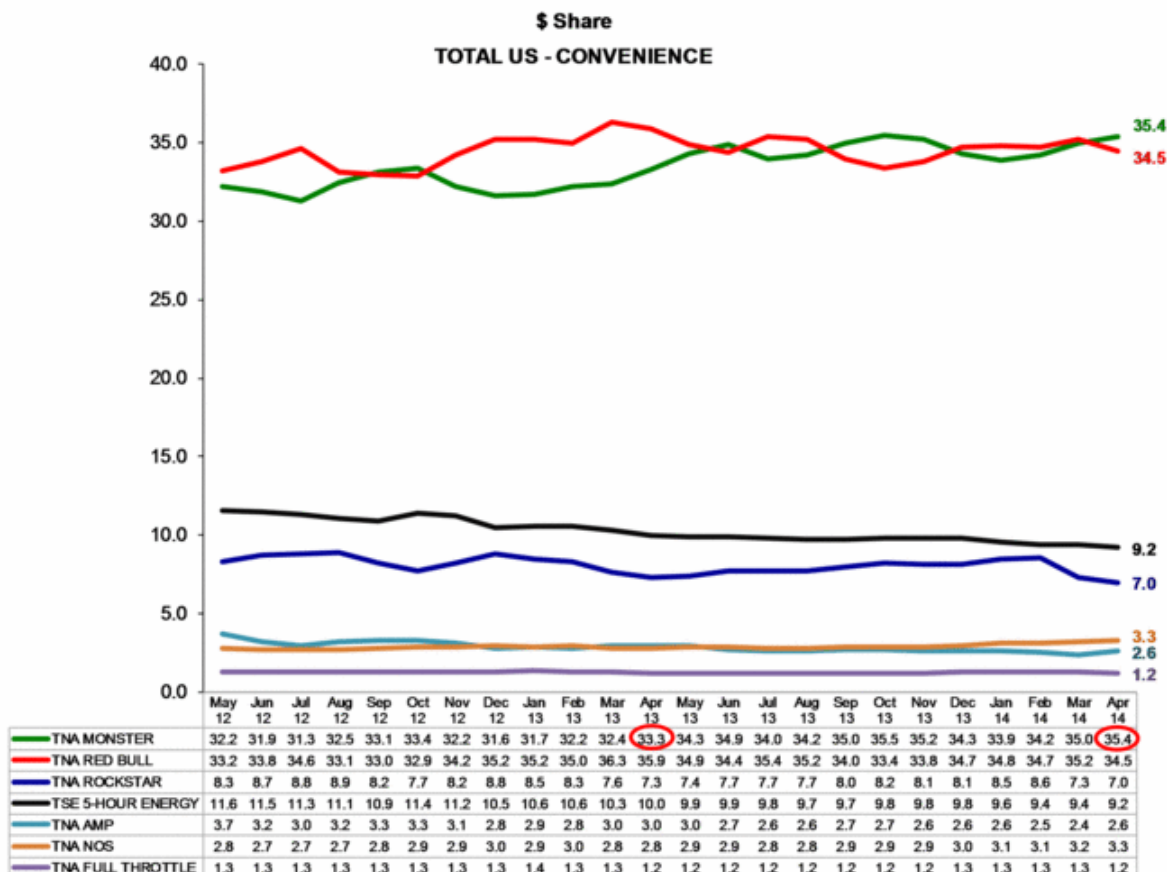
Monster Beverage Corporation

Based in Corona, California, Monster Beverage Corporation is a marketer and distributor of energy drinks and alternative beverages. The Company markets and distributes Monster Energy® brand energy drinks, Monster Energy Extra Strength Nitrous Technology® brand energy drinks, Java Monster® brand non-carbonated coffee + energy drinks, X-Presso Monster® brand non-carbonated espresso energy drinks, M3® Monster Energy® Super Concentrate energy drinks, Monster Rehab® non-carbonated energy drinks with electrolytes, Muscle Monster® Energy Shakes, Übermonster® energy drinks, and Peace Tea® iced teas, as well as Hansen's® natural sodas, apple juice and juice blends, multi-vitamin juices, Junior Juice® beverages, Blue Sky® beverages, Hubert's® Lemonades and PRE® Probiotic drinks. For more information, visit www.monsterbevcorp.com.

#



Source: AC Nielsen All Measured Channels (Conv, Groc, Drug, Mass incl Walmart) - 4 Weeks Ending 04/26/2014



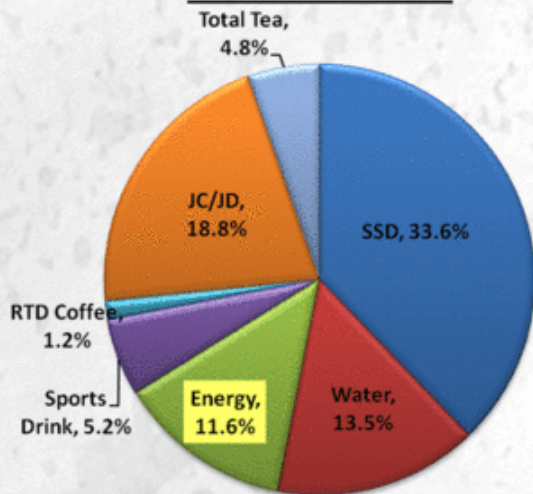
Source: AC Nielsen Total US Convenience - 4 Weeks Ending 04/26/2014



Energy leading growth in AMC Channel

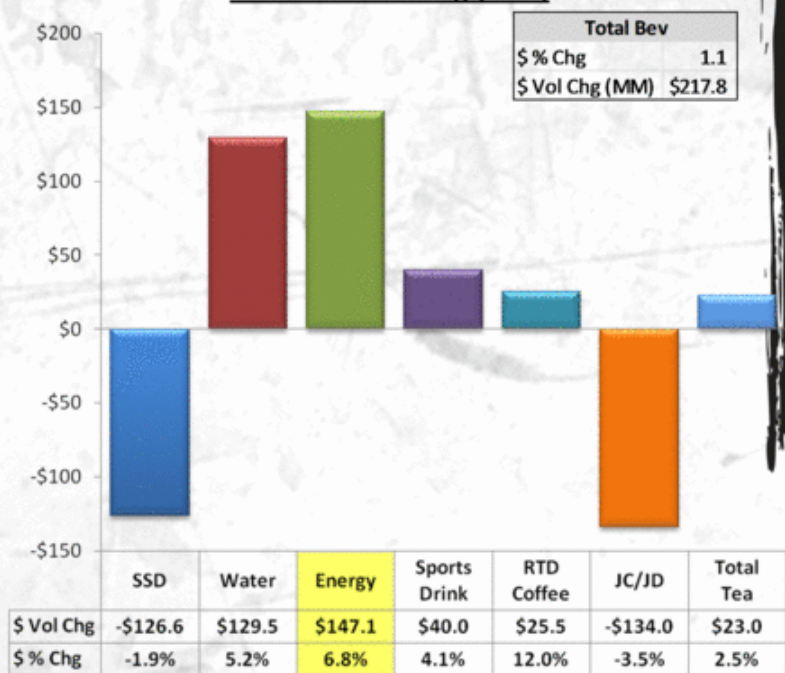
AMC Retail: Total Beverage Segment Performance

Dollar Volume Share



Dol Shr Chg	
SSD	(1.0)
Water	0.5
Energy	0.6
Sports Drink	0.1
RTD Coffee	0.1
JC/JD	(0.9)
Total Tea	0.1

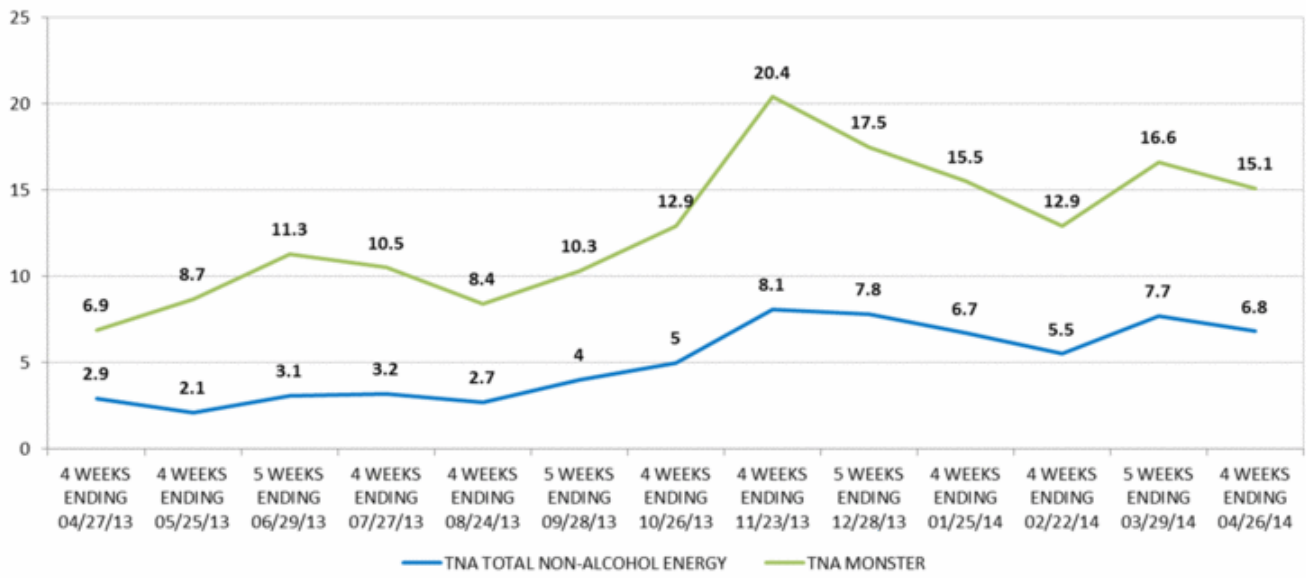
Dollar Volume Chg (MM)



Total Bev	
\$ % Chg	1.1
\$ Vol Chg (MM)	\$217.8

Source: Nielsen AMC YTD M/E 03/29/14

Total US All Measured Channels - \$ % Chg vs YA



Source: AC Nielsen All Measured Channels (Conv, Groc, Drug, Mass incl Walmart) – 4 Weeks Ending 04/26/2014